

# Nautilus Scuba Club 29 Apr -7 May 2020

# Tubbataha Reefs

DIVE INTO THE WORLD'S MOST AWE INSPIRING REEFS



Stella Maris



For More information contact Simon on  
0423 603 753 or [simon@diversiondivetravel.com.au](mailto:simon@diversiondivetravel.com.au)



An underwater photograph showing several divers swimming over a vibrant coral reef. The water is clear blue, and the coral is in various shades of green and yellow. Bubbles are visible around the divers.

Nautilus Scuba Club - Cairns

6 Night Tubbataha Reefs

Thu 30 April - Wed 6 May 2020

**From AU\$ 2950 pp\***

Aboard the Stella Maris a 118 ft. luxury yacht with a 24 ft. beam for a stable cruise at 10 knots. Guest crew ratio of 1:1

Up to 19 dives free Nitrox

Expertly prepared meals and snacks incorporating lots of fresh fruits, vegetables and a variety of proteins served with a local flare.

Variety of spacious cabin configurations all with private baths.

Upgrade to Standard twin cabin: AU\$ 375

Or Deluxe Double/twin cabin: AU\$ 625

Plus Reef & Port Tax: USD 270 pp

Plus Airfares ex-Cairns ~ AU\$ 1400 Deposit to secure your spot: AU\$ 300

\*Refer pricing notes on last page; trip departs Cairns Wed 29 April and returns Cairns Thu 7 May 2020, and includes one night in Manila and overnight return flight.

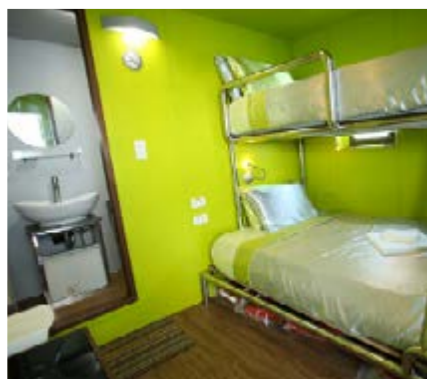
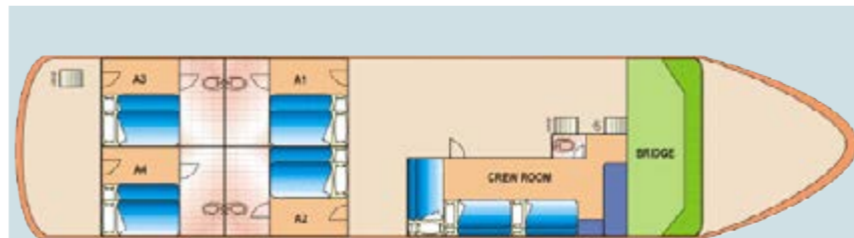






## Stella Maris Accommodation

Stella Maris is a 118 foot luxury yacht designed with your comfort in mind. Ten spacious cabins accommodate up to 21 guests with all of the conveniences you expect. Dec-orated in a modern retro-chic style all cabins have private baths. The cabins are divided between three decks providing ample space for relaxing and socialising between dives. Stella Maris Explorer offers both deluxe and premium economy cabins with twin, queen or double beds available and all offer memory foam mattresses and pillows for some of the best sleep you will find on a dive liveaboard. The bridge deck has a spacious salon, the living and dining areas and includes a large TV for relaxing and socialising between dives. The top relaxation deck offers chairs and lounges in both direct sun and the shade to soak up the sun, read a book or catch the sunset while enjoying a cocktail at the end of the day.







## Tubbataha diving

The diving in the Philippines must be seen to be believed. It's just that good.

Tubbataha was established as a UNESCO World Heritage Site in 1993 and is located in the middle of the Sulu Sea over 80 miles offshore from Palawan. Tubbataha is comprised of three atolls (North Atoll, South Atoll and Jessie Beazley) and is home to over 350 coral species, 600 species of fish and 100 bird species. These atolls are known for clear water and big creature diving! Whales Sharks, Hammerheads, Tiger Sharks and Manta Rays can all be found in the waters surrounding these three Atolls.

Highlights include:

Bird Island and North Tubbataha diving Shark Airport, Washing Machine (Larry's Reef), Seafan Alley, Ranger Station, and Amos Rock (8 dives total). South Tubbataha diving Black Rock, North Wall of South Atoll, Light House, Delsan Wreck, and Staghorn Point (8 dives total).

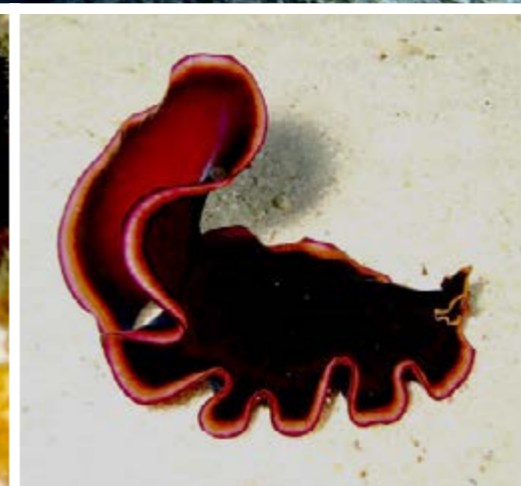
2 to 3 dives on Jessie Beazley Reef.

4 scheduled dives per day, with up to 19 dives total diver to dive guide ratio of 5:1

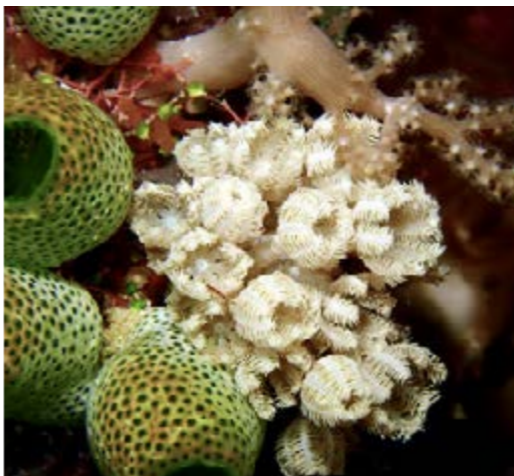
Free Nitrox; Rental equipment available













Includes: airport transfers at Puerto Princesa, full board including snacks and beverages (water, coffee, tea & juices); accommodation as specified

Up to 19 dives, with weights, tanks, guides, & Nitrox/Air

Beer, wine, alcohol and espresso is available for purchase on board.

Excludes: Flights, crew gratuities, Hotel in Manila, Reef & Port tax of USD 270





## Notes on Pricing

As the trip is planned for May 2020 the following needs to be taken into consideration.

1. The per person liveaboard price will be charged in USD converted to AUD at the exchange rate at the time payments are made.
2. An exchange rate of 0.71 has been used to illustrate the price today.
3. All cabins will be sold on a first come first served basis. Standard cabins are A1 - A4; Deluxe cabins are B1, B2 & B3.
4. A Reef and Port tax of USD 270 is payable locally on board
5. The current airfare Cairns to Puerto Princesa return inc. taxes and one night in a hotel in Manila is AU\$ 1400.
6. Deposits required: AU\$ 300 now to secure your place. Further AU\$300 six months prior to trip. Final balance three months prior to trip.

Deposits are non-refundable.

For further info call Simon on 0423 603 753 or email [simon@diversiondivetravel.com.au](mailto:simon@diversiondivetravel.com.au)